

EntheoNation presents

INTEGRATION
COACH
CERTIFICATION
PROGRAM

The Plant Spirit School

Ancient Medicine for Modern Times



PROGRAM PROSPECTUS

Table of Contents

Message
Opportunity
About
Who This is For
Who This is Not For
Why Now
What You'll Learn
What You Get
The Curriculum
The Skills Will You Gain

Weekend Virtual Retreats
Practicum Retreat in Brazil
Meet the Wisdom Keepers
Sacred Reciprocity
Our Values
Our Faculty
Our Advisory Board
Investment
Certification
Admissions Process



MESSAGE FROM THE FOUNDER

The psychedelic sector is one of the fastest-growing professional sectors in the world. As an emergent field in therapy and personal transformation, the opportunities for highly-skilled, experienced coaches are endless.

We, the faculty of The Plant Spirit School, saw a need to provide culture-based, heart-centered education that raises the bar for safety, integrity, diversity, inclusion, reciprocity, and cultural appreciation in the psychedelic sector and plant medicine community.

The Plant Spirit School advocates for community-oriented, culture-based healing with sacred plants and fungi.

We believe that participation in ancestral culture, community activism, and the shamanic arts are as integral to the healing process as taking the medicines themselves.

We aim to provide students with the necessary framework and skills needed to experience accelerated transformation through the safe, responsible, and intentional use of psychedelics. We hope to empower a generation of community leaders who are passionate about co-creating a psychedelic culture of peer-to-peer integration. If this sounds like something you want to be a part of, we encourage you to join us.

Lorna Liana

Founder of The Plant Spirit School





BECOME A PLANT MEDICINE INTEGRATION COACH

Are you ready to deepen your understanding of sacred medicines, shamanic healing, and transformation?

Do you feel called to help others prepare for, navigate, and integrate profoundly healing transformational experiences through the intentional use of ceremonial medicines?

Whether you are an active or aspiring coach, discover how you can create a livelihood through sacred service and ceremony.

The Plant Spirit School's coach training program will give you access to powerful tools and techniques that will deepen your understanding of consciousness-expanding medicines, specifically the plant medicines and fungi that are used in sacred ceremonies.

Discover how to support lasting positive transformation for yourself and others through the intentional use of ancestral medicines. A unique vocation awaits you!

A UNIQUE
CAREER OPPORTUNITY

ANCIENT MEDICINE FOR MODERN TIMES

Psychedelic medicine is a promising new frontier in psychotherapy, but many visionary plants and fungi have been used for healing and spiritual purposes for millennia around the world, in cultures that venerate sacred medicines and their ability to expand our consciousness.

This unique online training program explores the intersection of psychedelic therapy and ancestral plant spirit medicine, integrating new and ancient paradigms of healing and wholeness that are effective and relevant for modern times.

Currently, the rising demand for psychedelic retreats and experiences outpaces the supply of qualified psychedelic-assisted therapy practitioners.

There is a tremendous need for qualified and experienced integration coaches and therapists to support people through their profoundly transformational journeys.



Art by Luis Tamani



ABOUT THE PLANT SPIRIT SCHOOL

The Plant Spirit School Coach Certification program is a training program for plant medicine integration specialists, taught by experienced ceremony facilitators, therapists, and coaches.

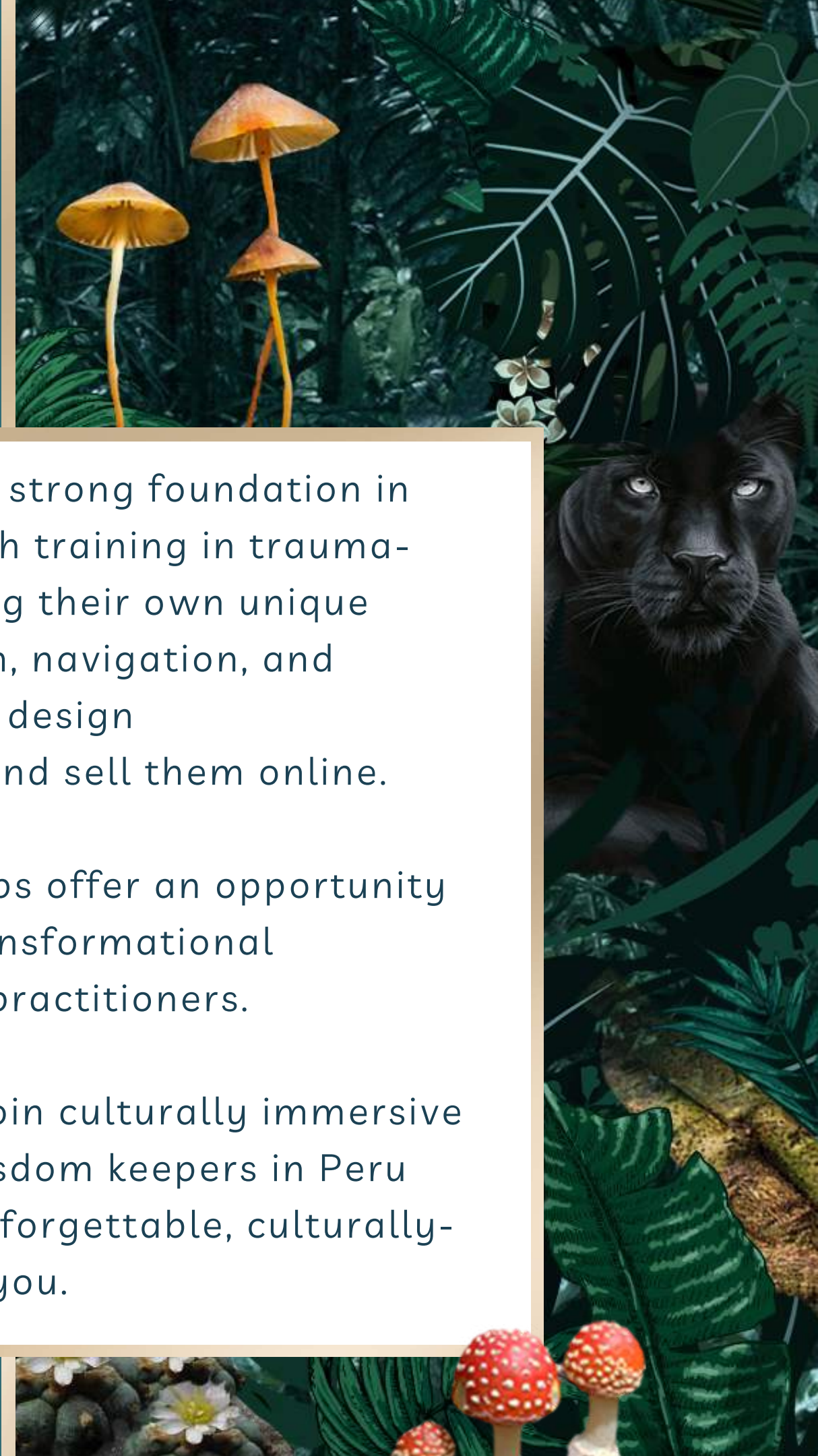
This program is designed to give you a complete toolkit to provide integration support for clients, as well as techniques you can use on yourself, to self-integrate your own healing journeys.

You will also learn about the cultures that use ayahuasca, huachuma, and psilocybin.

In the program, students will receive a strong foundation in psychedelic harm-reduction, along with training in trauma-informed care. In addition to developing their own unique framework for psychedelic preparation, navigation, and integration, students will learn how to design transformational coaching programs and sell them online.

Weekend virtual retreats and workshops offer an opportunity to dive deeper into ceremonial and transformational experiences, both as participants and practitioners.

Students will also have the option to join culturally immersive practicum retreats with indigenous wisdom keepers in Peru and Brazil at a preferential rate. An unforgettable, culturally-rich, life-changing experience awaits you.





WHO THIS PROGRAM IS FOR

- **Anyone who wishes to learn how to optimize their entheogenic experiences** using effective frameworks, tools, and techniques
- **Experienced ceremony participants who wish to cultivate their leadership abilities** so that they can be of greater service to their medicine community
- **Aspiring or existing therapists and coaches** who wish to incorporate plant medicine integration into their practice as a new transformational modality.
- **Aspiring or existing psychedelic professionals** who wish to understand, learn, and incorporate shamanic healing paradigms into their practice
- **Medical professionals and naturopaths** who wish to incorporate evidence-based psychedelic integration into their practice.

APPLY NOW





WHO THIS PROGRAM IS FOR *(cont.)*

- ❁ **Shamanic, spiritual, and holistic healers** who wish to incorporate evidence-based psychedelic integration into their practice.
- ❁ **Ceremony retreat organizers and venue hosts**, especially those who work with indigenous and mestizo shamans.
- ❁ **People who support psychedelic ceremonies and sessions**, such as ceremony venue hosts, assistants, angels, and guardians
- ❁ **Tripsitters** holding space for clients who wish to journey with medicines they have sourced themselves.
- ❁ **Integration circle facilitators and psychedelic community organizers** seeking to incorporate a holistic, culture-based approach to entheogenic integration into their practice

APPLY NOW



WHO THIS PROGRAM IS NOT FOR

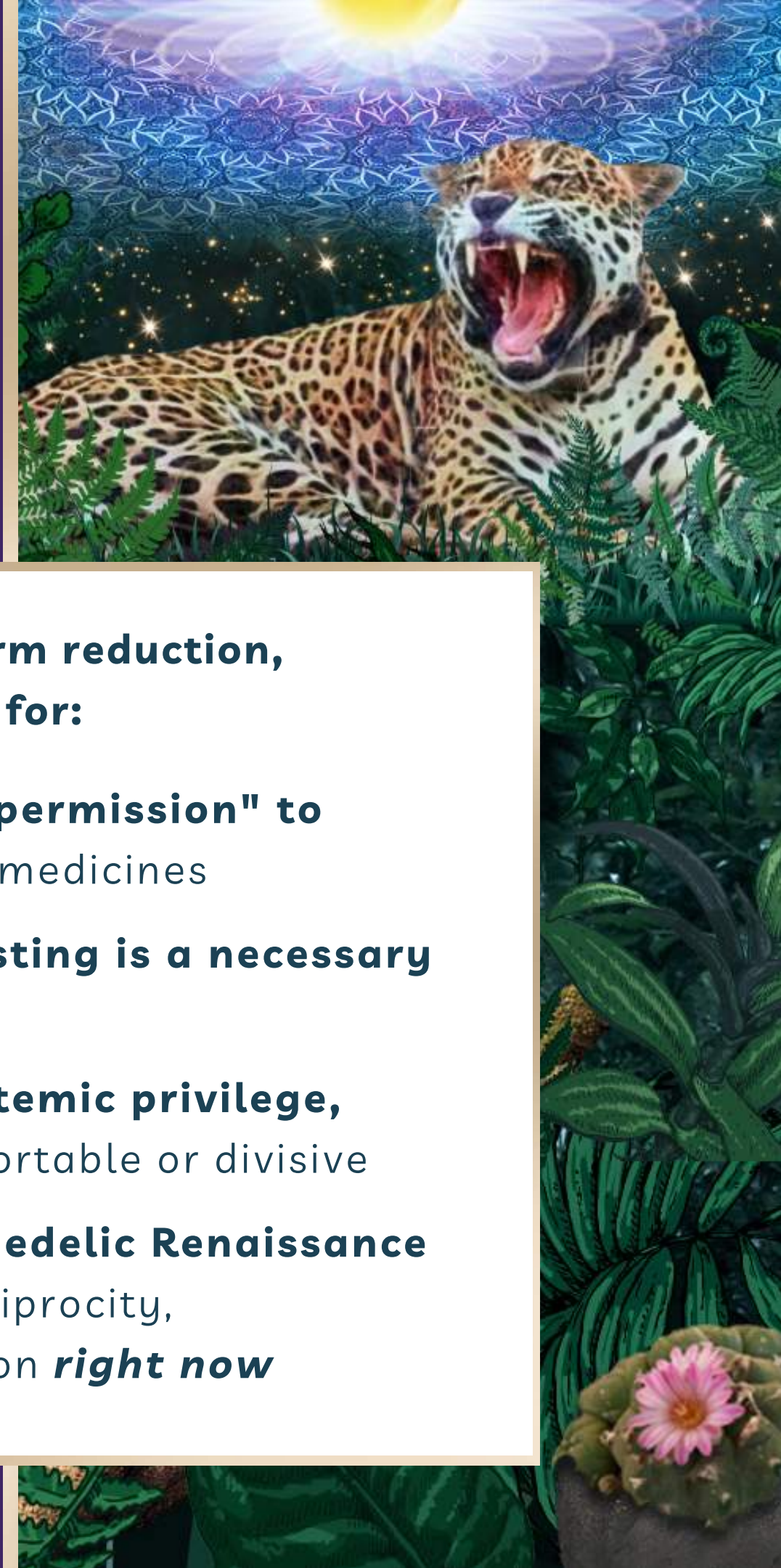
The Plant Spirit School is NOT a Psychedelic Facilitation Training Program

We encourage anyone seeking to facilitate psychedelic ceremonies and sessions to learn from an appropriate elder, within a community of experienced cohorts, in the modality they wish to practice in.

APPLY NOW

As advocates for psychedelic safety and harm reduction, our coach certification program is not ideal for:

- 🌀 **Those who wish to use this training as "permission" to administer** psychedelics and sacred plant medicines
- 🌀 **Those who do not believe that COVID testing is a necessary** safety protocol for group ceremonies
- 🌀 **Those who find conversations about systemic privilege,** racial inequity, and decolonization uncomfortable or divisive
- 🌀 **Those who wish to profit from the Psychedelic Renaissance** without considering and advocating for reciprocity, sustainability, diversity, equity, and inclusion ***right now***





The Time is Now

A GLOBAL MENTAL HEALTH CRISIS

We are facing significant societal challenges

Addiction, depression, and suicide are increasing around the world at an alarming rate



400% increase in prescriptions for antidepressants in the US over the last 20 years.

National Center for Health Statistics 2011



227% increase in depression among US adults during the COVID-19 pandemic, from 8.5% to 27.8%

Ettman et al, JAMA Network 2020



35% increase in suicide rate in the US since 1999, making it the 2nd leading cause of death in ages 10-34

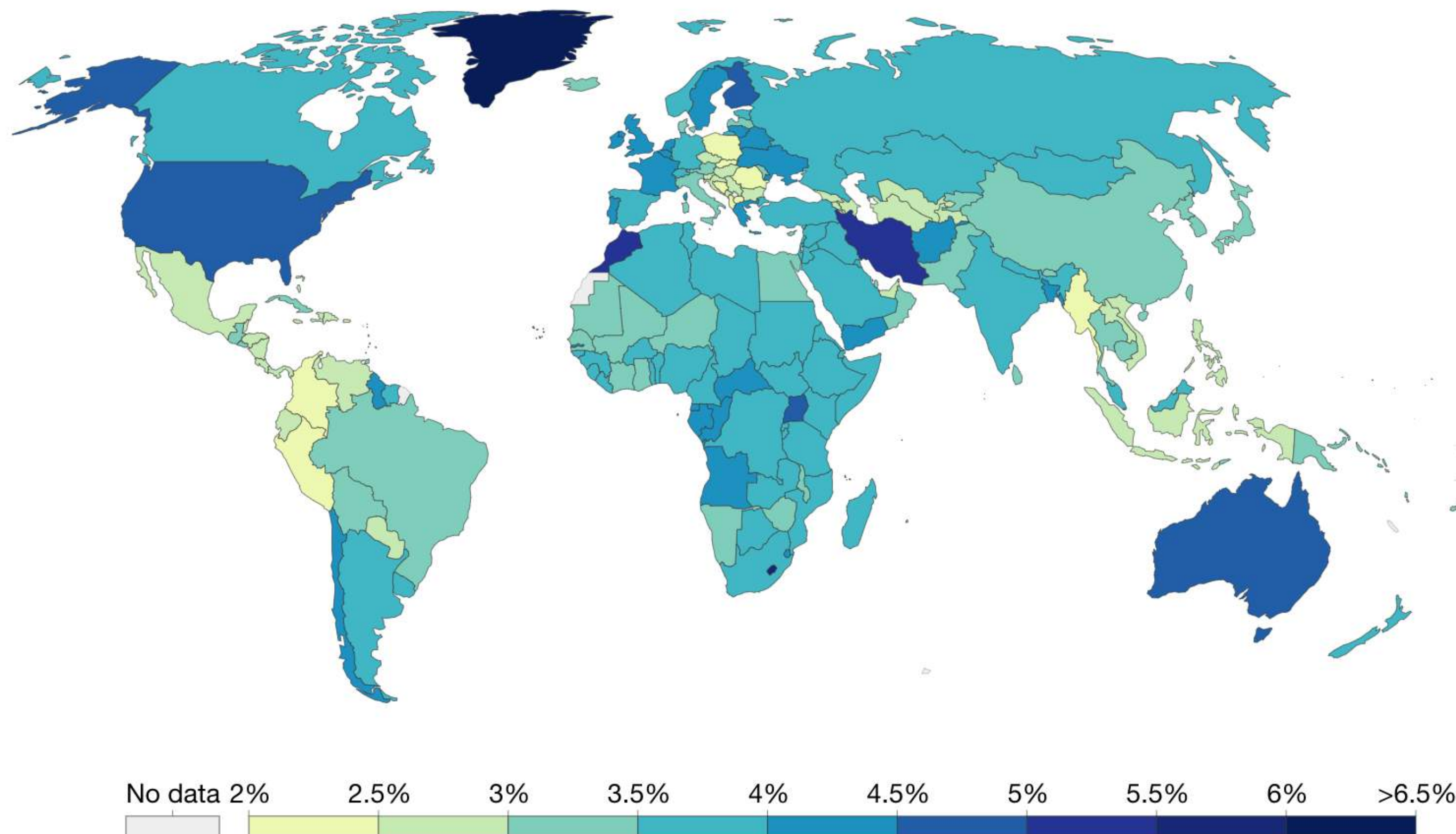
National Center for Health Statistics 2020

SHARE OF THE POPULATION WITH DEPRESSION, 2017

Share of the population with depression, 2017

Our World
in Data

Prevalence of depressive disorders in a given population. This is measured as the age-standardized prevalence, which assumes a constant age structure to compare between countries and through time. Figures attempt to provide a true estimate (going beyond reported diagnosis) of depression prevalence based on medical, epidemiological data, surveys and meta-regression modelling.



Source: IHME, Global Burden of Disease

<https://ourworldindata.org/mental-health#depression>

CC BY

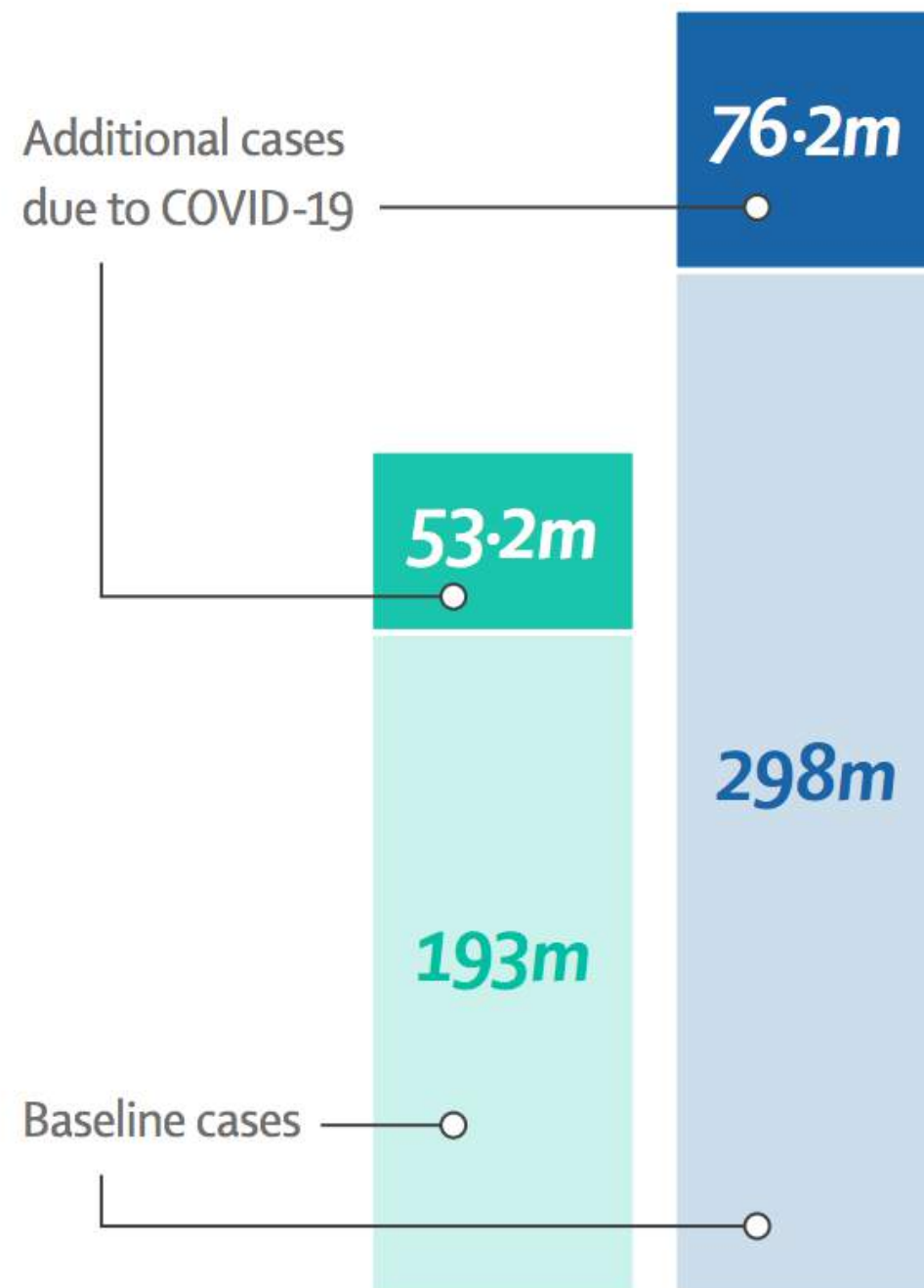
GLOBAL PREVALENCE OF DEPRESSION & ANXIETY IN 2020 DUE TO THE COVID-19 PANDEMIC

Cases of mental disorders rose sharply during the pandemic

Cases in 2020

Major depressive disorder

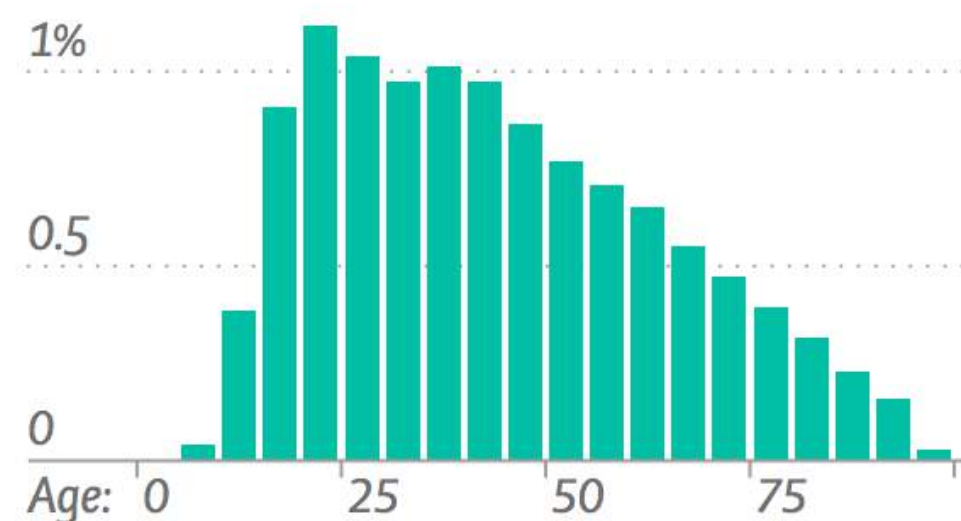
Anxiety disorders



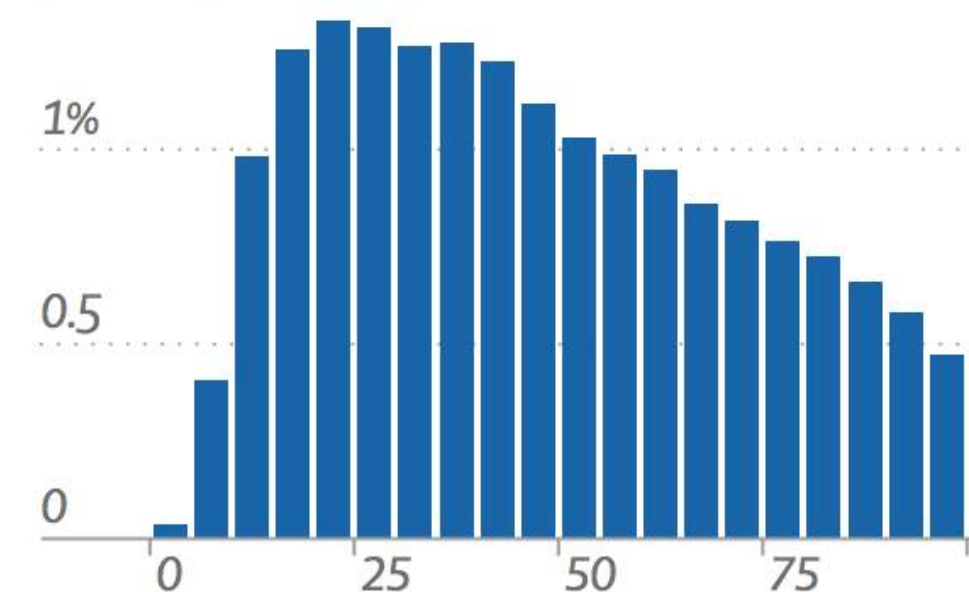
Younger people were hardest hit

Additional prevalence due to COVID-19, by age

Major depressive disorder



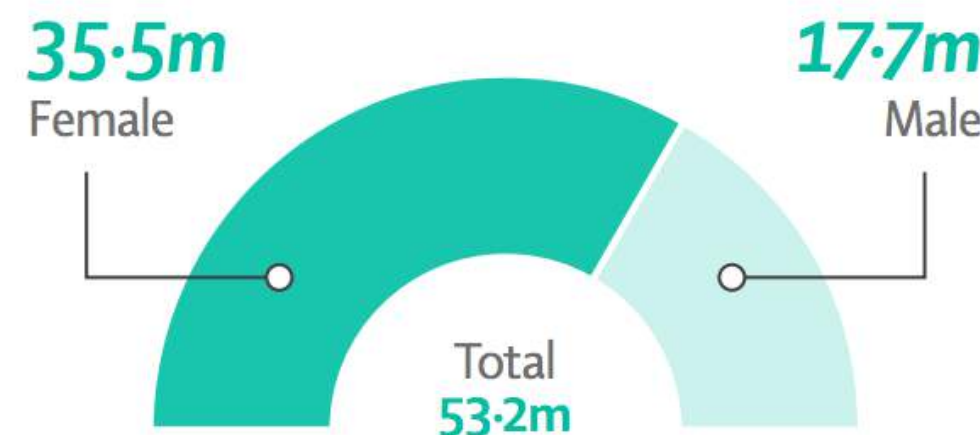
Anxiety disorders



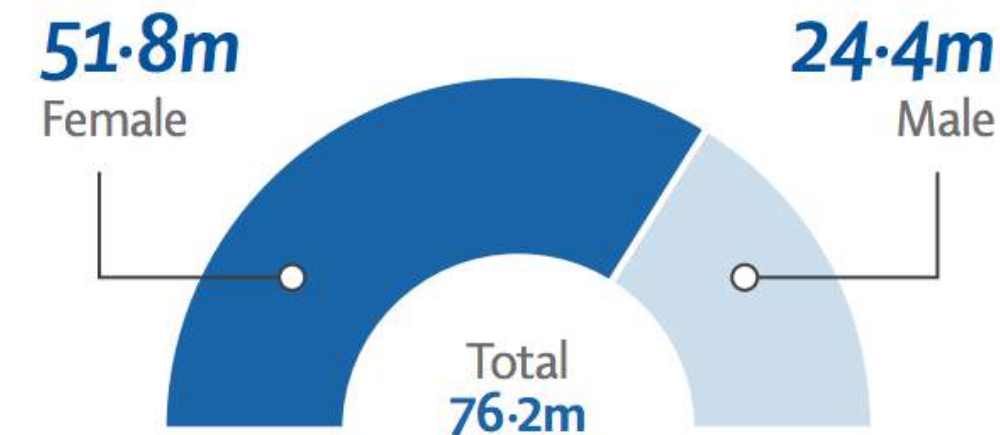
Increases were higher among females than males

Additional cases due to COVID-19, by gender

Major depressive disorder



Anxiety disorders



[https://www.thelancet.com/journals/lancet/article/PIIS0140-6736\(21\)02143-7/fulltext](https://www.thelancet.com/journals/lancet/article/PIIS0140-6736(21)02143-7/fulltext)

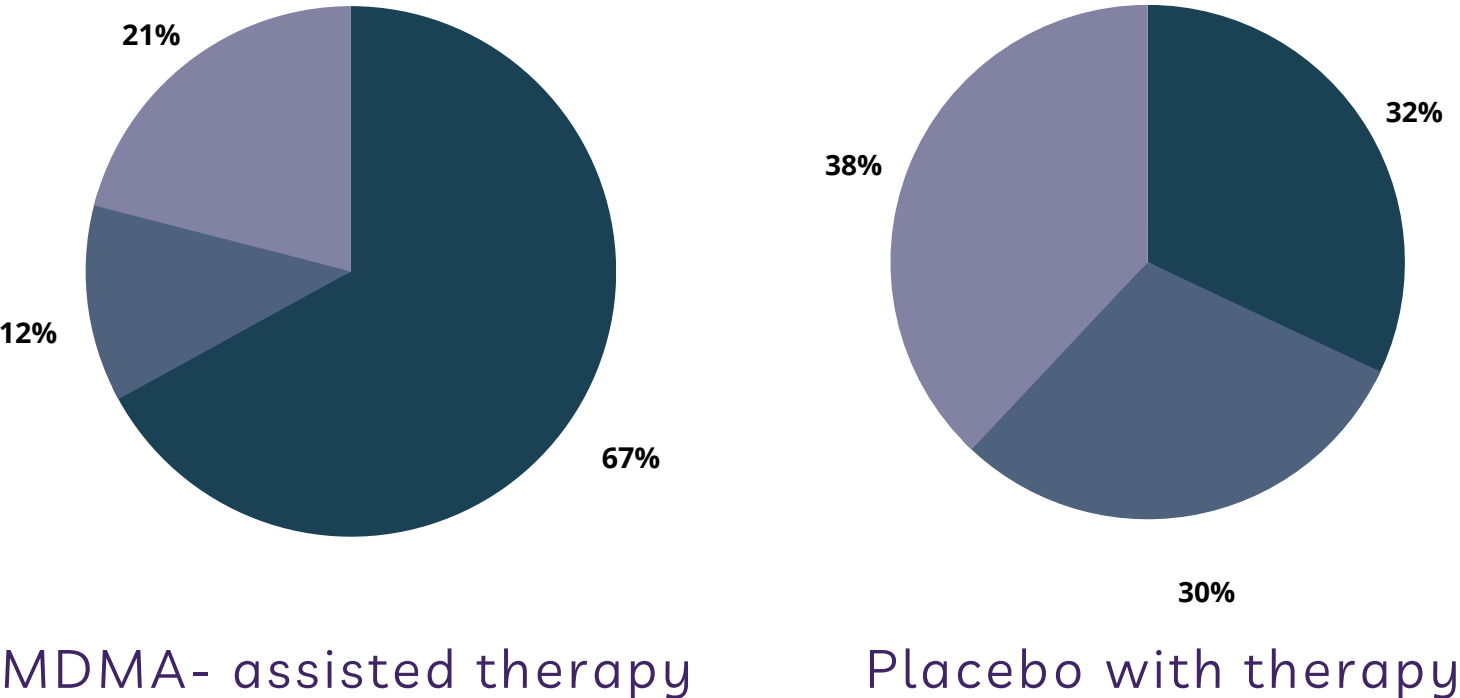
Read the full paper: Santomauro DF, Mantilla Herrera AM, Shadid J, et al. Global prevalence and burden of depressive and anxiety disorders in 204 countries and territories in 2020 due to the COVID-19 pandemic. The *Lancet* 2021. Published online October 8.

THE PROMISE OF PSYCHEDELIC MEDICINE

Recent scientific research shows the therapeutic potential of psychedelics in treating PTSD, depression, and anxiety

TREATMENT- RESISTANT PTSD PATIENTS

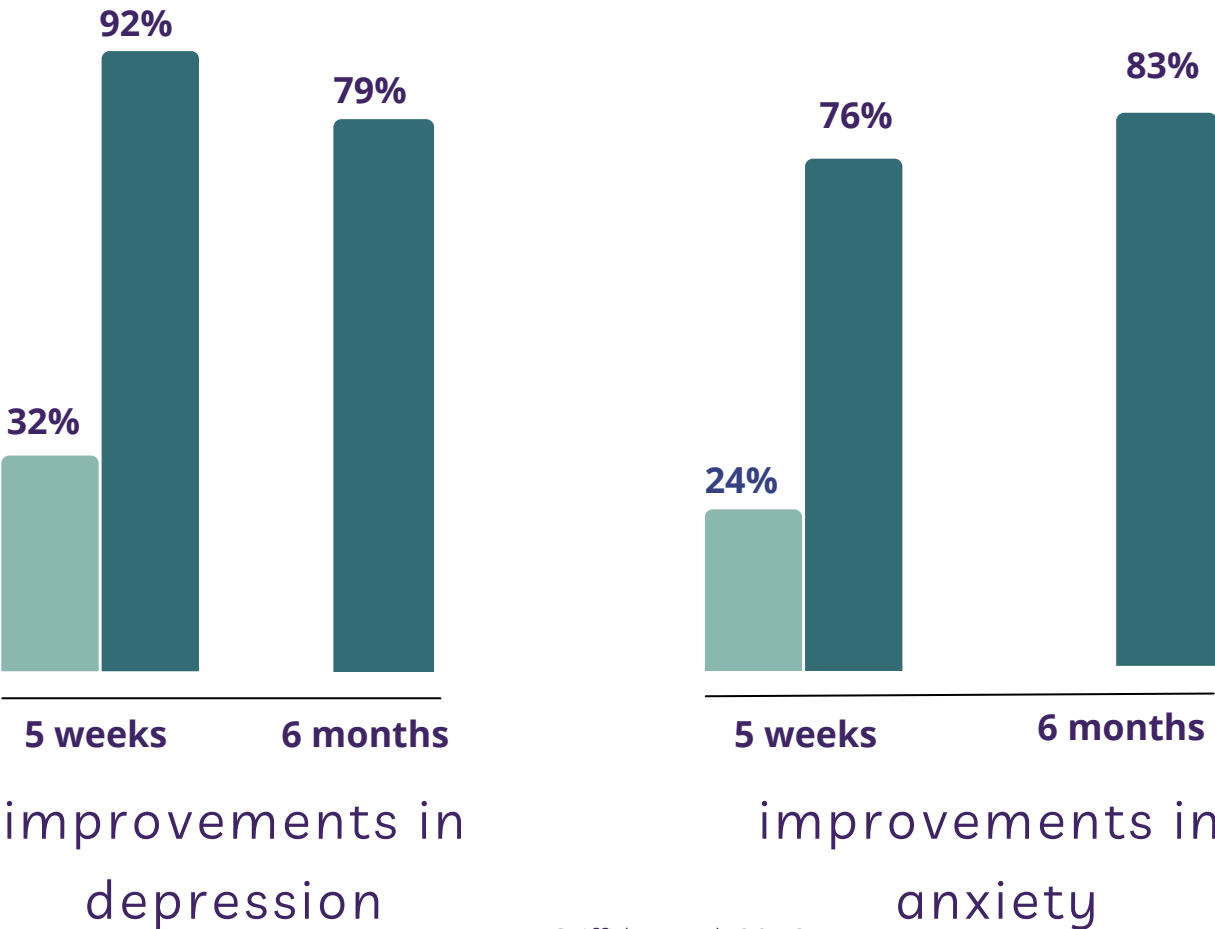
- Lost their PTSD diagnosis
- Clinically meaningful response
- No response



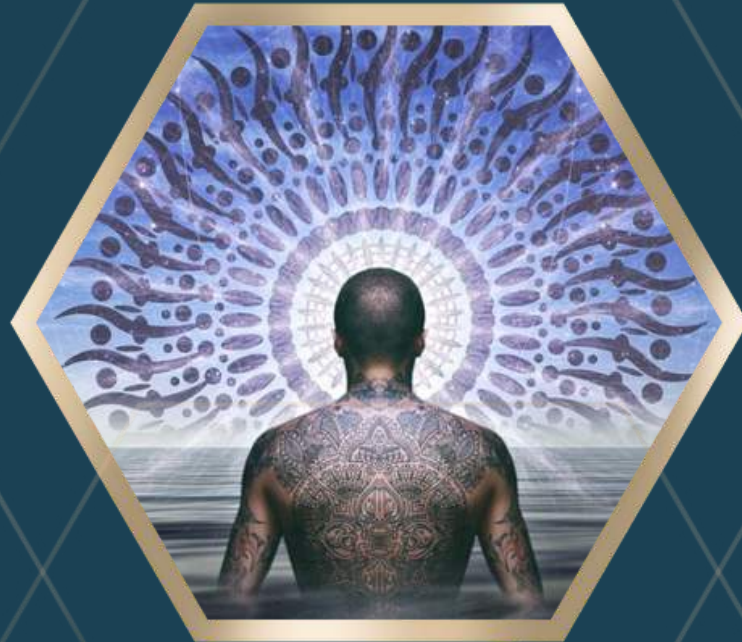
*Mitchell 2021, Nature Medicine

PATIENTS WITH LIFE-THREATENING CANCER

- Clinical response - psilocybin group
- Clinical response - control group



Griffiths et al. 2016



HOPE FOR PSYCHEDELIC BREAKTHROUGH THERAPIES

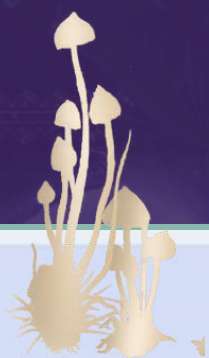
The FDA has granted "breakthrough therapy" designation to MDMA, ketamine, and psilocybin in order to expedite their development for the treatment of serious mental health disorders. Psychedelic medicine is expected to play a significant part in the future of psychiatry.



THE REALITY OF LEGAL PSYCHEDELIC ACCESS

Currently, ketamine treatments are the only legally available form of psychedelic therapy. While demand for psychedelics is increasing, and decriminalization measures expanding, possession of most psychedelics, including ancestral plant medicines, is still considered to be illegal by law enforcement.

MORE PEOPLE SEEKING PSYCHEDELIC RETREATS



● **psychedelic retreat**
Search term

● **ayahuasca retreat**
Search term

● **psilocybin retreat**
Search term

+ Add comparison

Worldwide ▼

2004 - present ▼

All categories ▼

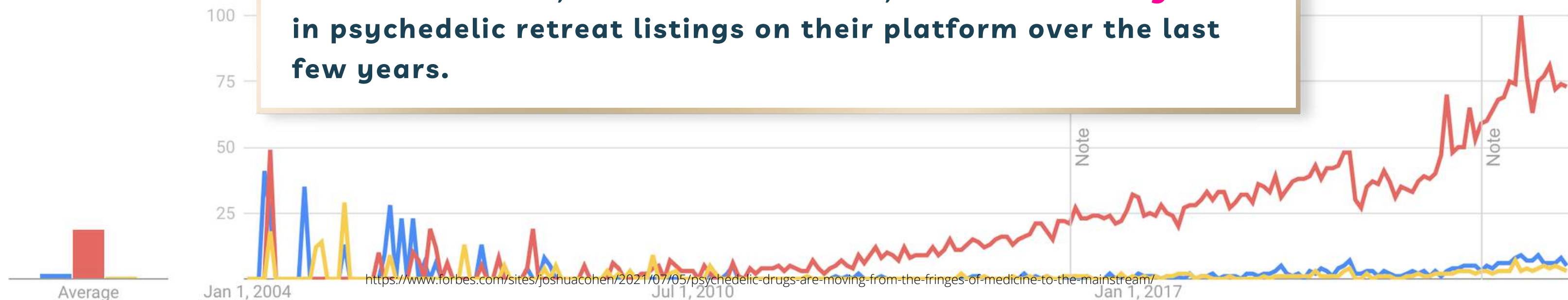
Web Search ▼

Interest over time

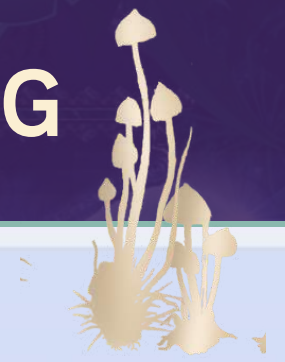


Because psychedelics still aren't legally accessible, many seekers of psychedelic experiences are turning to underground facilitators, ceremonies and retreats, or participating in legal retreats in other countries.

Cameron Wenaus, CEO of Retreat Guru, tracked **50-73% growth in psychedelic retreat listings on their platform over the last few years.**



MORE PEOPLE ARE INTERESTED IN MICRODOSING



● Microdosing
Topic

+ Compare

Worldwide ▼

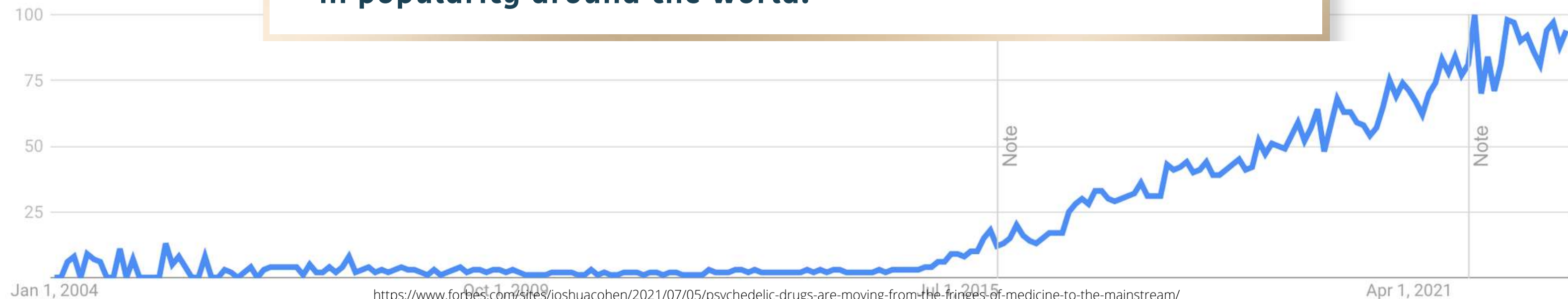
2004 - present ▼

All categories ▼

Web Search ▼

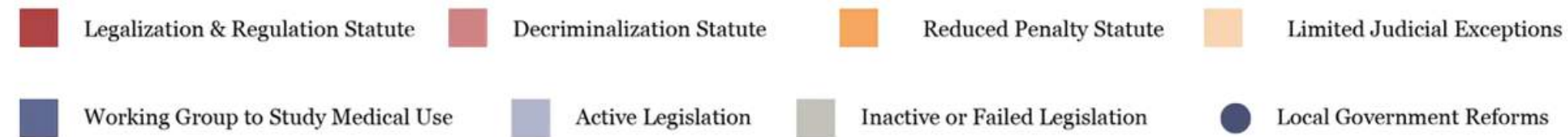
Interest over time

Microdosing, the practice of taking tiny, sub-perceptual amounts of psychedelics like LSD or psilocybin (but also ayahuasca, mescaline, and others) for focus, creativity, mood-enhancement, and pain management is also increasing in popularity around the world.

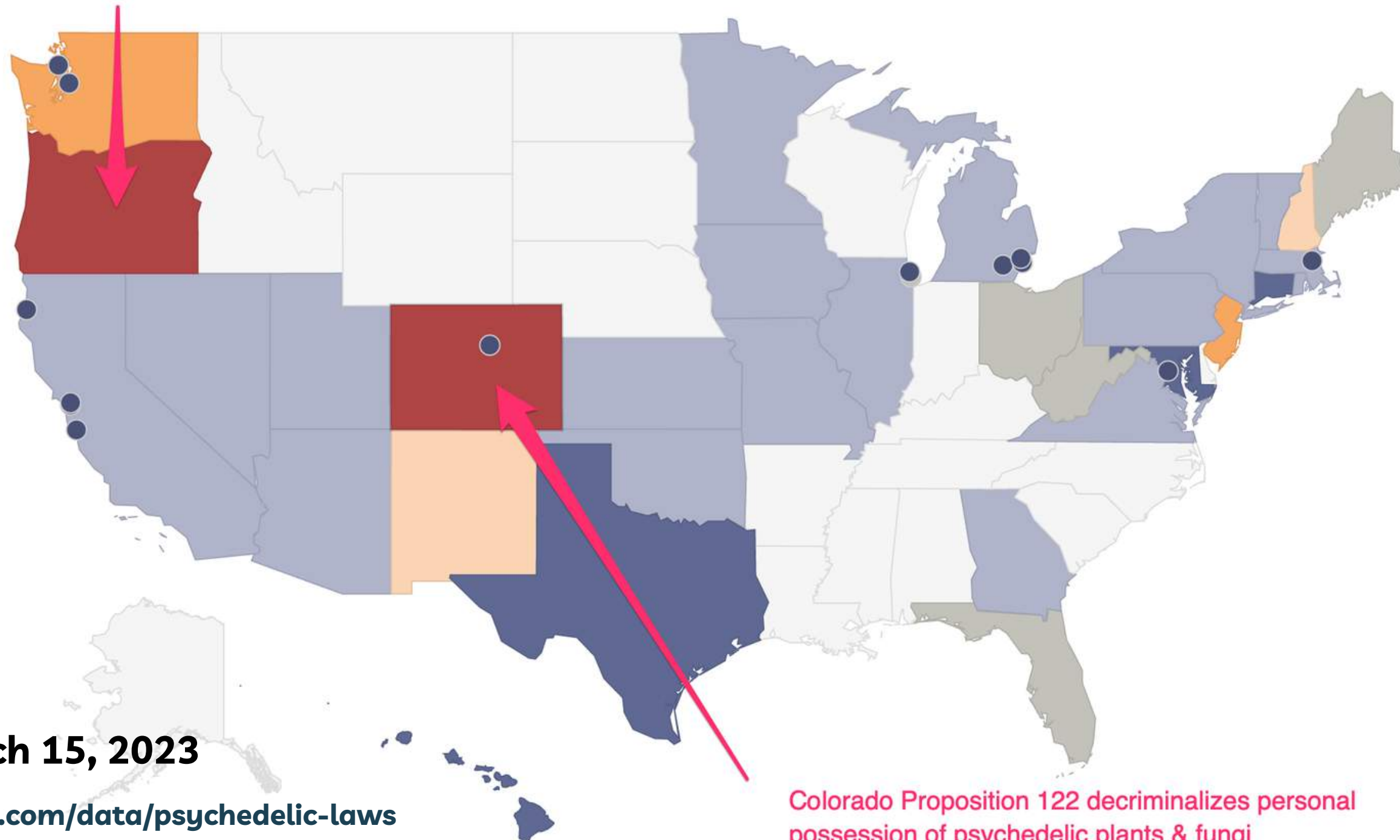


<https://www.forbes.com/sites/joshuacohen/2021/07/05/psychedelic-drugs-are-moving-from-the-fringes-of-medicine-to-the-mainstream/>

DECRIMINALIZATION & LEGALIZATION ARE EXPANDING IN THE US



Oregon Measure 109 legalizes psilocybin products & services
Oregon Measure 110 decriminalizes personal possession of illegal drugs



Last Updated March 15, 2023

<https://psychedelicalpha.com/data/psychedelic-laws>

PSYCHEDELIC INTEGRATION SUPPORT

A Fast-Growing Professional Sector with Limited Providers

Currently, demand for psychedelic experiences outpaces the rate at which qualified integration therapists and coaches are entering the sector.




32 Million People
In the US Have
Tried Psychedelics



\$10 Billion Is the
Forecasted Market
Size for Psychedelics
by 2027



2000+ Clinics Are
Expected to Open In
the Coming Years



PSYCHEDELICS ARE NOT A SILVER BULLET

[APPLY NOW](#)

TRANSFORMATION BEGINS WITH PSYCHEDELIC INTEGRATION

The post-ceremony afterglow period is a powerful time for people to integrate new insights, beliefs, and behaviors. But, without accountability and the support of a coach or therapist, many people fall back to old habits and patterns.

The need for psychedelic integration support is increasing rapidly, but there aren't enough trained integration therapists and coaches to meet this demand.

Education programs specializing in psychedelic-assisted therapy are not graduating students fast enough to serve an expanding community of people in need of integration support.

Furthermore, the global pandemic ballooned humanity's mental health crisis, resulting in increased demand for psychotherapy services worldwide, and long waiting lists for qualified therapists of all specializations.

PSYCHEDELIC THERAPY - A HIGH BARRIER TO ENTRY

APPLY NOW

Many of the existing psychedelic training programs are focused on the **clinical administration of psychedelic medicines** such as ketamine, MDMA, and psilocybin.

Academic curricula are oriented towards psychotherapeutic frameworks, clinical research, pharmacology, and neuroscience.

Admission into these programs is typically open to licensed psychotherapists, clinicians, and medical professionals, or those with academic credentials in social work, mental health counseling, religious studies, psychotherapy, and medicine.

This disqualifies a significant portion of the plant medicine community, many of whom have been working ceremonially with visionary sacraments for years, if not decades, through lineage-based apprenticeships and training.

Other accredited programs with less stringent requirements involve a 2-3 year commitment, offering the equivalent of Master's and Ph.D. level accreditations.

PSYCHEDELIC THERAPY - THE QUESTION OF GATEKEEPING

APPLY NOW

Not only is this a big investment, it raises the questions of **legitimacy and medical industry gatekeeping**.

Is someone with Westernized academic credentials inherently more "qualified" to offer psychedelic support?

Ironically, because of the restrictive legal landscape, some of the best-known, accredited psychedelic training programs **do not require real-life experience** with psychedelics, nor are they able to legally offer it.

This raises a different question - is it necessary for a psychedelic integration provider to have had personal experience with psychedelics in order to support their integration clients effectively?

PSYCHOTHERAPY VS COACHING - WHICH IS RIGHT FOR YOU?

APPLY NOW

THERAPY

Psychotherapy is a licensed profession, which involves satisfying certain requirements in order to practice therapy. Licensure is defined by local laws, and licensed therapists typically charge by the hour (with some accepting insurance).

A therapist helps people resolve psychological problems, through one or more specific modalities they are trained in. Specialization in transpersonal psychology, nondual psychotherapy, psychodynamic therapy, and/or trauma healing modalities (such as EMDR) will form a strong framework for a therapist to support clients in psychedelic integration.

One drawback - **licensed therapists run the risk of losing their license** if they advocate for the use of illegal substances, or are discovered administering them. A certification in psychedelic-assisted therapy **does not confer legal permission** to administer psychedelics in jurisdictions where that psychedelic is considered to be illegal.

PSYCHOTHERAPY VS COACHING - WHICH IS RIGHT FOR YOU?

APPLY NOW

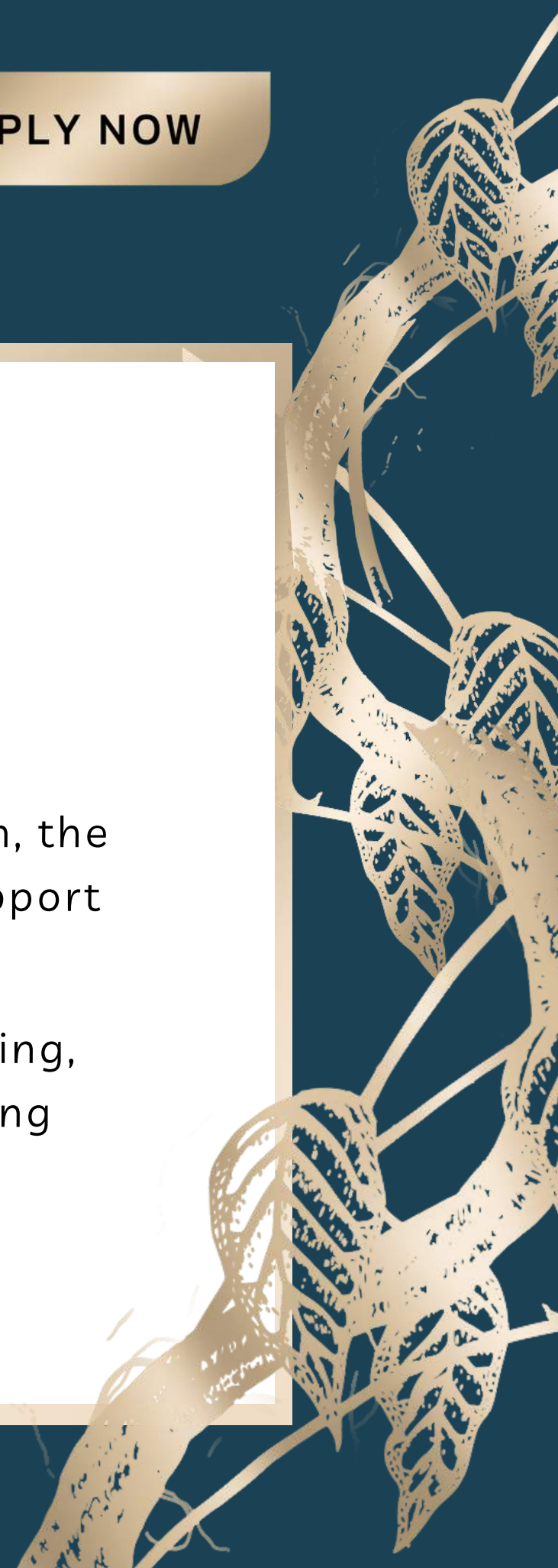
COACHING

Coaching is an unlicensed profession. While some coaches charge by the hour, many offer service packages oriented around desired outcomes. Health insurance does not usually cover coaching costs.

A coach helps people reach specific, measurable goals. In the context of integration, the client's goal might be to process the psychedelic experience(s) they've had and get support on weaving those insights into their daily life.

Some integration coaches help clients prepare for their journey, through intention setting, preparing the body, mind, and the space, and harm reduction strategies, such as advising about testing substances, dosage, and emergency interventions to have on hand.

Microdosing coaches are an emergent category of transformational coaches.





WHAT YOU'LL
LEARN

OUR COACHING MODEL

We focus on supporting students develop 3 core capacities:

- **Harm Reduction.** Foundations of psychedelic harm-reduction and trauma-informed care - education that is rarely provided in spiritual plant medicine communities.
- **Professional Capacity-Building.** We'll cover core skills you will need to develop to be an effective integration service provider, such as coaching clients, ceremony space-holding, hosting integration circles and creating transformational offers.
- **Cultural Awareness.** We'll explore the cultures and traditions surrounding ancestral medicines such as ayahuasca, huachuma, and psilocybin, how global medicine culture is evolving, and why decolonization is essential in the Psychedelic Renaissance.



OUR METHODOLOGY

Integration coach core
capacity development
follows this roadmap.

STAGE #6
LAUNCH YOUR OFFER

STAGE #4
**HONE YOUR PRACTICAL
SKILLS**

STAGE #2
**CULTIVATE SELF-
CONFIDENCE**

STAGE #5
**CRAFT YOUR
SIGNATURE OFFER**

STAGE #3
**EXPAND YOUR
EXPERTISE**

STAGE #1
**CLAIM YOUR SOUL
CALLING**



**THE PLANT SPIRIT SCHOOL INTEGRATION COACH
SUCCESS PATH**

HERE'S A SNAPSHOT OF WHAT YOU'LL GET

LEARN MORE

On-Demand Video Training

60+ hours of instruction, with weekly on-demand video training, taught by our faculty of facilitators, therapists, and coaches.

The Plant Spirit School Library

On-demand access to our entire content library, including ebooks, guides, and an archive of expert interviews

LIVE QA & Skill-Building Calls

Weekly skill-building calls with our faculty, on different transformational modalities, such as cognitive behavioral therapy (CBT), neurolinguistic programming (NLP), and shamanic ritual and journeying.

Manual, Worksheets, & Templates

Coach training manual, plus all the documents you need to support your practice, including: client intake, facilitator screening, medical assessment and liability waiver forms

PLUS: access to The Plant Spirit School online community & **private Signal channel**, a secure place to seek advice and receive support

PROGRAM STRUCTURE

LEARN MORE

INTEGRATION COACH TRAINING Every Tuesday @ 9-11 AM Pacific

Tuesday from 12PM to 2PM Pacific.

EXPERT LECTURES

Every Thursday @ 12-2PM Pacific

Core curriculum modules are comprised of a pre-recorded lecture that is released on Friday, followed by live QA calls with the module instructor the following Thursday from 12PM to 2PM Pacific.

LIVE QA & Skill-Building Calls

Weekly skill-building calls with our faculty, on different transformational modalities, such as cognitive behavioral therapy (CBT), neurolinguistic programming (NLP), and shamanic ritual and journeying.

Manual, Worksheets, & Templates

Coach training manual, plus all the documents you need to support your practice, including: client intake, facilitator screening, medical assessment and liability waiver forms

PLUS: access to The Plant Spirit School online community & **private Signal channel**, a secure place to seek advice and receive support

CURRICULUM

[LEARN MORE](#)

I. FOUNDATIONS OF PSYCHEDELIC TRANSFORMATION

PSYCHEDELIC MEDICINE | THERAPY & BEHAVIOR CHANGE

You will learn about the therapeutic benefits of psychedelic medicines and the conditions they might treat. You will gain an understanding of how psychedelics increase neuroplasticity and enhance the brain's capacity for change.

MEDICINE CULTURE | RITUAL PRACTICE & SHAMANIC HEALING

The expansion of sacred plant medicines around the world has given rise to a vibrant, transnational medicine culture that blends diverse shamanic beliefs and practices. Explore the core principles of universal shamanism, as well as ancestral plant medicine healing. Learn powerful tools and techniques to integrate into your plant medicine practice.



LEARN MORE

II. PRINCIPLES OF JOURNEY OPTIMIZATION

PREPARATION, NAVIGATION & INTEGRATION

We'll explore the similarities and differences in preparing for journeys with ayahuasca, psilocybin, and other psychedelic medicines. We'll cover safety, ceremonial containers, medical screening, dietary preparation, and intention-setting for ceremony and beyond.

MICRODOSING

Microdosing, the practice of taking small, sub-perceptual amounts of sacred medicines, can be a powerful post-ceremony integration tool. You'll learn how to create a microdosing protocol, establish goals, and evaluate progress toward desired outcomes, for yourself and others.

CURRICULUM

III. CREATING CULTURAL CHANGE

TRAUMA-INFORMED TRANSFORMATION

You'll learn the principles of trauma-informed integration, as well as powerful transformational modalities for releasing and healing past trauma. We'll explore how to use sacred medicines as catalysts for healing personal and collective trauma.

ETHICS, LEGALITY & DECOLONIZATION

We will examine the legal challenges and nuances for those interested in growing a service-based business in the psychedelic sector, along with the difficulties of establishing industry ethical standards. We'll explore why decolonization is still needed in plant medicine culture, along with strategies to expand diversity, equity, and inclusion.



LEARN MORE

IV. COACHING BUSINESS ESSENTIALS

SACRED BUSINESS AS A PATH OF LIBERATION

We will examine the challenges, nuances, and gifts of growing a service-based business in the psychedelic sector. You'll learn ways in which your plant medicine practice and sacred service can become a powerful force for social change.

CREATING YOUR SIGNATURE OFFER

You will learn how to clarify your unique offer for the ideal clients you are meant to serve, along with articulating the transformational journey they will experience in your integration program. You'll receive support in crafting your sacred signature offer, so you're ready to work with clients once you graduate.

CURRICULUM

V. SOUL PURPOSE VISION QUEST

DISCOVER YOUR SOUL PURPOSE & ACTION ITS FULFILLMENT

Learn how to answer the call to step more fully into plant medicine work as a leader in your community, while integrating our entheogenic work into your vocation. With this framework, you will be able to clarify the Soul Purpose you came here to fulfill and claim a source of spiritual and shamanic power that will align and accelerate all that you do in service of that purpose.

MASTER YOUR DREAMS & MANIFEST THEM INTO REALITY

The eight steps in the Soul Purpose Vision Quest framework will take you on a journey starting from identifying and understanding the unconscious patterns appearing in your dreams, through reclaiming your innate gifts and releasing disempowering beliefs, to effortlessly tapping into your flow state and channeling your sacred visions into inspired action.



WHAT SKILLS WILL YOU GAIN?

[LEARN MORE](#)

Transformational Coaching

Grow a 1-to-1 and group transformational coaching practice with plant medicine integration as a tool for accelerated change. Teach integration workshops, courses, and master classes.

Create Safer Ceremony Spaces

You will learn how to minimize harm and create more welcoming, inclusive, and equitable spaces for BIPOC and trans, non-binary, and gender non-conforming folk so that they feel safe enough to surrender and receive the healing they deserve.

Personalized Microdosing Programs

Learn about the most commonly used natural medicines for microdosing. Get the entire toolkit to become a microdosing coach, from protocols, intake surveys, goals assessment, and sourcing.

Host & Organize Medicine Ceremonies

Get the tools you need to host ceremonies and retreats with indigenous and mestizo shamans from other countries, such as agreements, intake forms, screening protocols, and participant waivers.

Improve Your Ceremony Skills

Learn shamanic techniques to clear and move energy, uplevel your hapé facilitation, and cultivate trauma-informed integration skills so that the ceremonies you facilitate are even more transformative.

Host & Lead Integration Circles

You will receive step-by-step instructions on how to host a peer-to-peer integration circle as a revenue-generating, community-building service.





PRACTICUM
RETREATS

WEEKEND SKILL-BUILDING RETREATS

[LEARN MORE](#)

Virtual weekend retreats are designed to help you develop core practical skills using ancient and modern modalities of transformation

AYAHUASCA CEREMONY SAFETY

Learn the best practices for navigating ayahuasca ceremonies, facilitator-participant relationships, and issues that may arise.

INCLUSIVE SPACE-HOLDING

Cultivate the art of holding sacred healing spaces and tripsitting containers, that are non-judgmental, safe, and inclusive.

HAPÉ ONLINE INITIATION

Uplevel your shamanic skills by learning how to properly administer sacred Amazonian snuff, for yourself and others.

PEER-TO-PEER INTEGRATION

Learn how to facilitate community-based, peer-supported integration circles as a revenue-generating offer for your integration practice.

OPTIONAL 7-DAY PRACTICUM RETREAT

This retreat will take place in Akasha Retreat Center, less than 2 hours away from Rio de Janeiro, Brazil. Itaipava, where the center is located, is the perfect environment for deep healing immersions with indigenous leaders and plant medicines. The retreat spaces integrate beautifully with the surrounding lush vegetation, rivers, natural pools, and waterfalls.

OFF THE BEATEN PATH

This retreat will be held in the home of the Yawanawá indigenous peoples. They will share their healing traditions, which are distinct from those found in well-known medicine hotspots like Peru.

While not so familiar to the Western world, messengers of Yawanawá spirituality currently lead ceremonies in various capitals of Brazil and abroad, sharing the magic of this enchanted people through their ancestral medicines and exceptional musicality.

THE MEDICINES

During this retreat, you will get a chance to work with Uni (ayahuasca), Hapé (tobacco snuff), and Sananga (eye drops).

****Retreat is optional and is not included in the program tuition***

Retreat investment and dates TBD



MEET THE WISDOM KEEPERS & OUR RETREAT HOSTS

APPLY NOW



TEDDY WILDER ROMAS CAIRUNA

Teddy has more than 15 years of experience working with medicinal plants, cooking ayahuasca, and as a teacher and guide. He has worked for years to create a more modern system of shamanism that includes techniques that can be applied to the lifestyles and rhythms of modern society.

ROSAURA CAIRUNA CANAYO

Rosaura was born in 1960 in the Shipibo Konibo community of Pahoyan, Loreto, in the Peruvian Amazon.

Rosaura has 30 years of experience in holding ayahuasca ceremonies and providing treatments with medicinal and Master Plants.



MAESTRO DANILO FLORES APAZA

Danilo Quispe Apaza is a Papamisayoq, a “lineage priest” and practitioner of the Q’ero wisdom lineage of his Andean ancestors, a path that he has been training in since he was 2 years old. A traditional community healer, Danilo been facilitating Huachuma healing ceremonies for the last 5 years.



CELSO QUISPE FLORES

Celso Quispe Florez is a Papamisayoq (High Priest) of the Q’ero lineage. Celso studied to become a traditional healer under his father from the age of eight, to lead despacho (offering) ceremonies and conduct healing in his community. Celso works closely with the sacred coca plant, and conducts Karpay initiations every year.



MARC-JOHN BROWN

Marc-John is a practitioner of modern shamanism since 2008. These studies have taken him to work with tribal shamans of Colombia, Ecuador, Peru, Brazil, Korea, and Malaysia. Among his many callings are: ceremony & retreat facilitation, plant medicine integration, and coaching, writing and public speaking, indigenous capacitation, and advocacy.

ERIKA HUARCAYA

Erika was born into the world by her grandmother, a traditional Quechua Doula, and midwife in the loving embrace of cacao ceremony. Erika weaves her spiritual birth connection with cacao medicine into her shamanic healing and yoga practice, keeping her modern-day offerings rooted in the wisdom of one of cacao's original Andean lineages.







CULTURE 🌸 COMMUNITY 🌸 RECIPROCITY

The Plant Spirit School is a small, private, for-profit social enterprise whose mission is to:

Increase awareness of the therapeutic benefits of entheogenic medicines when used safely, responsibly, and with integrity;

Further harm reduction education and training, so that entheogenic healing spaces are safe, especially for BIPOC and LGBTQA+ participants;

Raise awareness of sustainability and social justice concerns arising from the globalization of ancestral plant medicines;

Expand diversity, equity, and inclusion in the psychedelic sector, so that participation is spiritually fulfilling and healing may be accessible to all.

With a commitment to continually re-invest company revenues towards furthering these objectives, while providing meaningful, fulfilling employment for the dedicated, hard-working members of our team.

[APPLY NOW](#)

OUR VALUES





APPLY NOW

SACRED RECIPROCITY

The Plant Spirit School faculty are committed to creating a diverse, inclusive, cross-cultural psychedelic community founded upon respect, friendship, and sacred reciprocity.

We facilitate indigenous interviews in our online events, as well as for other psychedelic conferences. We support the production of indigenous media, through our collaborations with the Huni Kuin of Brazil and the Siekopai of Ecuador. We also make direct financial contributions to indigenous communities, as well as to nonprofit organizations doing groundbreaking work in advocacy, legal reform, indigenous sovereignty, and sustainability.

SACRED COMMERCE

Sacred Commerce is the practice of business as a path of awakening and self-realization. We aim to create prosperity, balance, health, opportunity, and harmony in our communities through the empowered exchange of goods and services, within a paradigm of conscious capitalism.

We believe that everybody should be well-paid for the work that they do, especially indigenous wisdomkeepers. In Sacred Commerce, profit is considered to be an expression of love, a source of nourishment that provides prosperity to all stakeholders. Profitable enterprise can be a powerful force for positive change, supporting a sustainable, equitable, and inclusive society.

OUR VALUES



MEET THE TEACHERS



SERENA WU
Partner,
Radicle Law LLP



**PILAR HERNÁNDEZ-
WOLFE**
Family Therapist



**CONSTANZA
SÁNCHEZ AVILÉS**
ICEERS



MARC-JOHN BROWN
Shamanic Coach, Native
Wisdom Hub



ALUNA LUA
Entheogenic Guide,
Ascension Arts



CRYSTAL DAWN
MD, Herbáalist, Consultant



BEN MALCOLM
Spirit Pharmacist



SKYE WEAVER
Earth Medicine Mentor



SA'ED AL OLIMAT
Licensed
Pharmacist



LORNA LIANA
Founder, The Plant
Spirit School



ANGELL DEER
Founder of The
Sanctuary



**ANAHITA ANAIS
PARSEGHIAN**
Microdosing Expert



ATIRA TAN
Head of Integration,
AYA Healing Retreats



MANESH GIRN
Neuroscience PhD Candidate,
EntheoTech Bioscience



KYLEA TAYLOR
Author, Ethics of Caring



ÁLVARO ZÁRATE
Co-Founder,
Microhuasca





LORNA LIANA *Founder*

Lorna is Founder & CEO of EntheoNation, Host of the Plant Spirit Summit & Founder of the Plant Spirit School.

Back in 2004, while drinking visionary plant medicines with indigenous shamans in the Brazilian Amazon, she discovered her soul's mission:

"To leverage emerging technologies to preserve indigenous traditions, so that ancient wisdom can benefit the modern world, and technology can empower indigenous people."

KYLEA TAYLOR *Author, The Ethics of Caring*

Kylea Taylor, M.S., LMFT developed and teaches InnerEthics®, a self-reflective, self-compassionate, approach to ethical relationship with clients. She is a California licensed Marriage and Family Therapist. Kylea started studying with Stanislav Grof, M.D. and Christina Grof in 1984 and worked with Stanislav Grof as a Senior Trainer in the Grof Transpersonal Training throughout the 1990s, She is the author of The Ethics of Caring, The Breathwork Experience, Considering Holotropic Breathwork®, and is the editor of Exploring Holotropic Breathwork®.



ALUNA LUA *Medicine Priestess*

Aluna is a Brazilian plant medicine priestess and trusted advocate of the Brazilian indigenous people. She has spent time with multiple indigenous tribes across the Americas and has been a student of various plant medicine cultures for the last twelve years.

A dedicated lightworker, she is fully devoted to serving the community as an entheogen educator, lifestyle artist, and master of ceremony.



MARC-JOHN BROWN *Native Wisdom Hub*

Marc-John is a conscious entrepreneur from Edinburgh. Among his many callings are: ceremony & retreat facilitation, plant medicine integration and coaching, writing and public speaking, indigenous capacitation and liaising.

He has been a practitioner of modern shamanism since 2008, and these studies have taken him to work, and be in contact with, tribal shamans of Colombia, Ecuador, Peru, Brazil, Korea, and Malaysia.



SA'ED AL OLIMAT *Licensed Pharmacist*

Sa'ed Al-Olimat, PharmD is a Taiwanese-Jordanian first generation American immigrant. He is a licensed pharmacist and educator of psychedelic medicine. He has worked with pharmaceutical companies, prescriber clinics, hospice and palliative care organizations, insurance groups, and other settings to enhance patient care.

Dr. Sa'ed is a community-pharmacy manager and mental health advocate. His passion in advancing mental health outcomes led him to investigate psilocybin and other classical psychedelic compounds as tools for mental, spiritual, and emotional support.

ATIRA TAN *Integration Coach*

Since 2004, Atira has established numerous clinical art therapy and trauma recovery programs to help refugees, victims of environmental disasters, and the sex trafficking industry, especially throughout Asia and Australia.

She specializes in Trauma-Informed Yoga & Facilitation Training Programs, Women's Health and Leadership, Spiritual Activism, and Recovery from Sexual Abuse.

Currently, Atira holds retreats and teacher trainings globally, and serves as the head of integration and yoga teacher at AYA Healing Retreats in Peru.



APPLY NOW



ANGELL DEER

Founder, The Sanctuary

Angell is a mystic, medicine man, teacher, permaculturist, beekeeper, speaker, and lover of all forms of life. He has dedicated his life to remembering, learning, and teaching ancient wisdom through the lineages of Andean Cosmology and Norse Shamanism. His passion is to weave words and stories, people and places, darkness and light, wounds and love, ancient and modern times. Angell is trained as a veterinarian, medicine man, breathwork practitioner, reiki master, meditation teacher, herbalist, beekeeper, and more. He is an ordained minister and a licensed wellness professional.

CRYSTAL DAWN SILAS MD

Dr. Crystal Dawn is an herbalist, emergency room physician, blog writer, speaker, and world traveler.

Since completing her family medicine residency, she has undertaken two herbal apprenticeships, and has been initiated onto The Priestess Path.

Crystal currently serves at the Association for the Advancement of Restorative Medicine (AARM) and runs her medical practice in which she infuses medicinal botanicals and other integrative approaches into her wellness modalities.



SKYE WEAVER *Earth Medicine Mentor*

Skye is an Earth Medicine Mentor, Psychedelic Self-Care Specialist and Lead Facilitator for Medicinal Mindfulness's psychedelic therapy and guide training, "Psychedelic Sitters School."

Utilizing the pioneering work of Daniel McQueen and her training in Hakomi, Skye facilitates CannAbyss Solo Journeys, 1-on-1 medicine journeys utilizing Cannabis as a spiritual catalyst for trans-personal growth.



BEN MALCOLM

Spirit Pharmacist

Ben was trained as a clinical psychiatric pharmacist and worked in academia for almost five years before dedicating himself to Spirit Pharmacist. Today he provides psychopharmacology consulting, courses in psychedelic pharmacy, and a Member Resource and Support Program.

He is a lover of nature, exercise, music, and consciousness as well as being a father. He's passionate about cognitive liberty, self-realization, and psychedelic drugs.



ANAHITA ANAIS PARSEGHIAN

Microdosing Expert

Anahita Anais Parseghian is an Integrative Trauma Healing Expert, Microdosing Mentor, and Attunement Coach. She is the founder and chief editor at MicrodoseGuru.com.

Anahita teaches individuals how to consciously explore psychedelic microdosing in combination with a wide range of cutting-edge integrative modalities to attune their body, mind, and spirit for optimal health, balance, and alignment.

MANESH GIRN *Psychedelic Scientist*

Manesh is a PhD candidate in Neuroscience at McGill University and has lead- or co-authored over a dozen scientific publications and book chapters on topics including psychedelics, meditation, daydreaming, and the default-mode network.

He collaborates with some of the leaders in the field of psychedelic science and also runs a psychedelic science YouTube channel called *The Psychedelic Scientist*.



APPLY NOW



SERENA WU *Partner, Radicle Law LLP*

Serena Wu is an attorney and author who is passionate about therapeutic potentials of psychedelics and mission driven entrepreneurship. She is focused on providing legal solutions to purpose driven clients in the emerging industries such as psychedelics, cannabis, cryptocurrency and beyond. She has advised professionals and practitioners in the psychedelic space on the legal boundaries of psychedelic assisted therapy, corporate practice of medicine laws, informed consents, risk and liability mitigation, and religious freedom protections. She has also advised on DAOs, NFTs and their related securities issues.

PILAR HERNÁNDEZ-WOLFE *Family Therapist*

Pilar Hernández-Wolfe, Ph.D. is a mestiza earth keeper who blends indigenous and western ways of healing, relationship and ceremony. She is a descendant of indigenous peoples whose lands were stripped by a papal bull that declared them not human.

Pilar is a tenured professor and author, a licensed family therapist and a licensed clinical professional counselor, a clinical member and approved supervisor of the American Association for Marriage and Family Therapy, an approved clinical supervisor in the state of Oregon.



ÁLVARO ZÁRATE *Co-Founder, Microhuasca*

Álvaro is the co-founder of Microhuasca, a Peruvian social organization developing programs and protocols for ayahuasca microdosers and microdosing professionals, and Cosmovision. Before, he was founder and CEO at Waves & City Incubators & Doer, advisor to governments of Peru and Paraguay on development through entrepreneurship & innovation, Head of the Entrepreneurship school at Peruvian University of Applied Sciences (UPC), and postgraduate professor in Universidad de Lima (UL) and Universidad de Piura (UDEP).

CONSTANZA SÁNCHEZ AVILÉS *Law, Policy & Human Rights Director, ICEERS*

Constanza Sánchez Avilés is the Law, Policy & Human Rights Director at the International Center for Ethnobotanical Education, Research, and Service (ICEERS). She is a political scientist and holds a PhD in International Law and International Relations. Her main areas of work and research are national and international drug control policies and the intersection between drug control, human rights, and social justice.



APPLY NOW

ADVISORY BOARD



TONY MOSS

I AM LIFE MUSIC

Tony is a musician, artist, and founder of I.AM.LIFE, a non-profit event production project focused on interconnectivity. His work is a synthesis of passions in art, spirituality, and science, with emphasis on the evolution of human consciousness and potential.



LYNN-MARIE MORSKI

MD, Attorney

Dr. Lynn Marie Morski's transdisciplinary career has led her through medicine and law, which ultimately synergized into psychedelic advocacy and reeducation of conventional medical infrastructures on the therapeutic benefits of psychedelics.



DR. CRYSTAL DAWN SILAS

MD, Herbalist

Dr. Crystal Dawn is an herbalist, emergency room physician, blog writer, speaker, and world traveler.

Crystal currently serves at the Association for the Advancement of Restorative Medicine (AARM) and runs her medical practice in which she infuses medicinal botanicals and other integrative approaches into her wellness modalities.



DR. RICHARD MILLER

Author, Clinical Psychologist

Dr. Richard Louis Miller, M.A., Ph.D., has been a clinical psychologist for over 50 years. He is the founder of the Cokenders Alcohol and Drug Program, has been a faculty member at the University of Michigan and Stanford University, an advisor on the President's Commission on Mental Health, a founding board member of the Gestalt Institute of San Francisco, and a member of the national board of directors for the Marijuana Policy Project.



INVESTMENT

\$9900

FULL PAYMENT
(SAVE \$900)

OR

\$3600

DOWN PAYMENT

+ 2 INSTALLMENTS
OF \$3600
(\$10,800)

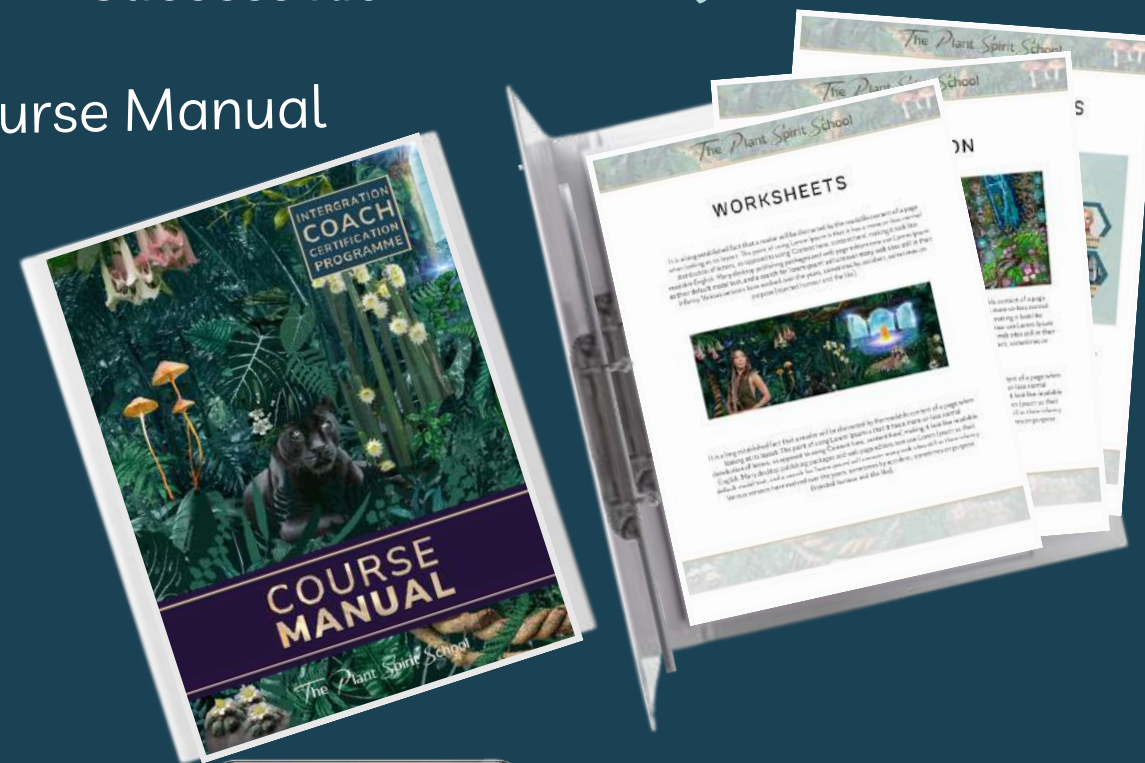
APPLY NOW

INTEGRATION COACH CERTIFICATION PROGRAM

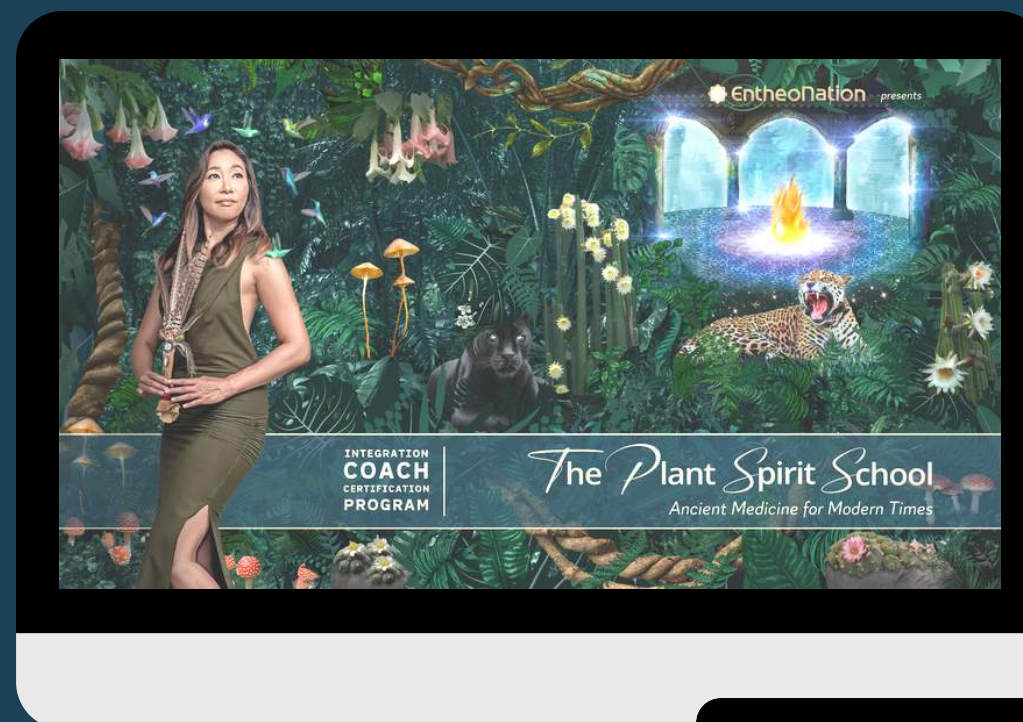
What's included?

Integration Coach
Success Kit

Course Manual



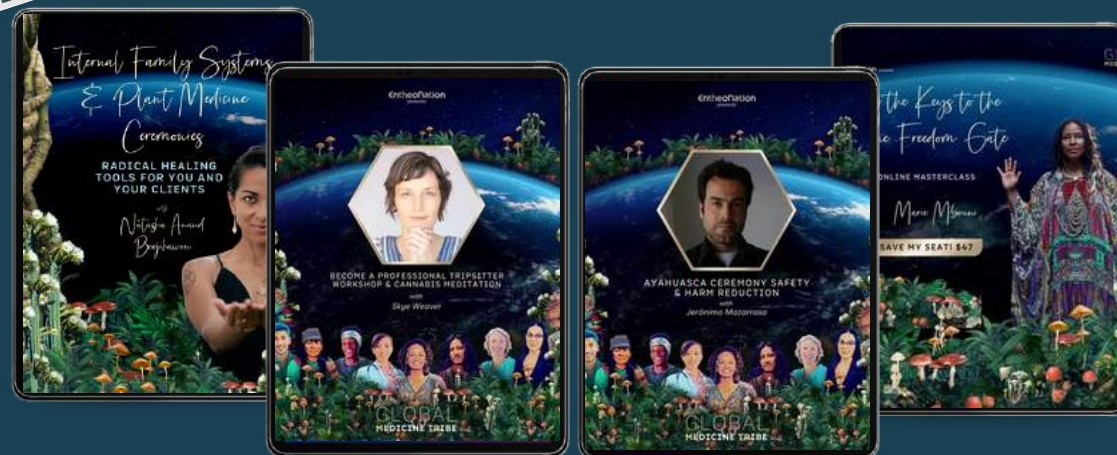
Plant Spirit School Library & Student Portal



Sacred Ceremony
Resource Collection &
Ultimate Guides



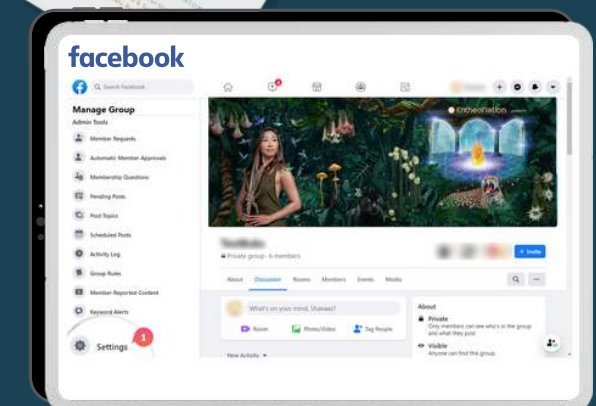
Weekend Virtual Retreats



Live Instruction by Lorna
Liana & Guest Faculty



Online Student
Community



WHAT YOU GET



- **75+ hours** of training
- **6-8 live calls** a month
- **Free virtual weekend retreats** while enrolled as a PSS student (dates & topics are subject to change)
- Coach Certification **Course Manual**
- On-Demand Video Library with **100+ Hours** of Content
- The **Sacred Ceremony Resource** Collection
- Integration Coach **Success Kit**
- **Ethnobotanical** Partner **Discounts**

PLUS:

- Bonus #1:** Sacred Reciprocity School
- Bonus #2:** Keys to Decolonizing Plant Medicine Culture
- Bonus #3:** How to Microdose Nature
- Bonus #4:** The Sacred Business Bundle

APPLY NOW

A black panther is the central focus, looking directly at the viewer. It is surrounded by lush green foliage, including large ferns and heart-shaped leaves. To the right, a tall cactus with several yellow, star-shaped flowers is visible. The background is a dense, dark jungle. A diagonal gold-colored line separates the image from the text on the right.

HOW DOES CERTIFICATION WORK?

Successful certification is dependent on attendance, test scores, homework assignments, and practicums, the completion of all fees, as well as the signing of an Ethics Pledge, as a statement of your commitment to upholding integrity and ethics as a plant medicine integration coach in the psychedelic sector.

Once certified you are entitled to use the title “**Plant Spirit School Certified Integration Coach**” in your marketing, and to use the exercises, tools, practices, and processes covered in the training. We will also provide you with a **Certification Badge** that you may use on your website and in your marketing collateral.

Certified students will furthermore be awarded **white label rights** to the templates provided in our Integration Coach Success Kit, whereby you may replace the headers with your own brand for use with your own clients. Certified students will also have the opportunity to join the Plant Spirit School as **paid assistant coaches** or **integration circle facilitators** on a percentage revenue share model, based on outstanding demonstration of skills, and available positions.

APPLY NOW



ADMISSIONS PROCESS

Are you ready to explore the deeply-fulfilling vocation of helping others receive lasting transformation through the integration of profoundly healing entheogenic experiences?

Here's how to apply:

Step 1 - Fill out the online application form completely. The form will autosave your answers if you need more time.

Step 2 - If your application is accepted, you will receive an online calendar link to book your Career Catalyst Session.

Step 3 - By booking a session, you commit to show up for yourself and attend the session at the approved timeslot.

Our ideal students regularly participate in plant medicine ceremonies and consider entheogenic medicines an integral part of their Soul Purpose. They are passionately committed to psychedelic harm reduction and furthering a culture of peer-to-peer integration.

Is this you?

APPLY NOW



FREQUENTLY
ASKED
QUESTIONS

FAQS

APPLY NOW

WHEN DOES THE PROGRAM BEGIN?

The **6-month program** begins on **Tuesday, July 11, 2023**

HOW MUCH DOES THE PROGRAM COST?

The **Standard Tuition** for our coach certification program is **\$9900 Full Pay**. There are a few payment plans available that we can discuss with you on your Catalyst Session.

A special Early Bird rate is available to those who commit **by February 25, 2023: \$8900 Full Pay** with payment plans available.

HOW LONG IS YOUR PROGRAM & WHAT IS THE TIME COMMITMENT?

This is an intensive 6-month program starting on **Tuesday, July 11, 2023** and ending on **January 31, 2024**, with 2 live calls a week. Some weeks may include a half-day virtual retreat. Expect to spend **6-8 hours a week** exploring the program content.

APPLY NOW

WHAT TIME ZONES ARE MOST COMPATIBLE WITH THE LIVE CALLS?

Though Lorna is based in Spain, the vast majority of our guest faculty and students are located in the United States, so time zone compatibility is most aligned with North American time zones.

Because the movement to decriminalize and legalize psychedelics for mental health and wellness is most prominent in the United States, we want to ensure that this training is accessible to the expanding group of aspiring coaches and therapists who wish to work in the legal psychedelic sector.

That being said, all calls are recorded and available on-demand in the student portal. Lorna, or one of the team members, will be available to answer questions posted in the Facebook group.

cont.

FAQS

DO I NEED TO HAVE EXPERIENCED PSYCHEDELICS TO BE ACCEPTED INTO THIS PROGRAM?

We prioritize applicants who have attended entheogenic ceremonies on a regular basis for at least one year. This is because we feel that it is essential that a psychedelic integration provider know what a psychedelic experience is before offering integration support.

Indeed, it is possible for many types of coaches who are familiar with altered states of consciousness achieved through other modalities to offer transformational services to a client who is seeking support for specific goals or outcomes, as well as challenges that may have been revealed by medicine work.

However, we believe that the positioning of oneself as a “plant medicine integration specialist” warrants personal experience with plant medicine ceremonies.

cont.

APPLY NOW

WHAT IS THE DIFFERENCE BETWEEN YOUR PROGRAM AND OTHER PSYCHEDELIC TRAINING PROGRAMS?

The Plant Spirit School Integration Coach Training Program is designed specifically for people who wish to be coaches, rather than therapists. Most of the psychedelic-assisted therapy programs are training people to support patients receiving psychedelic medicine (such as ketamine, MDMA, and psilocybin) in a clinical setting. These patients are typically seeking psychedelic therapy to address mental health conditions, such as anxiety, depression, PTSD, addiction recovery, and chronic pain.

Our coach training program is oriented towards people who participate in sacred medicine ceremonies for healing, spiritual insight, and personal growth. The program focuses on transformational modalities as well as shamanic practices to support achieving desired outcomes in life. This may include tangible goals, such as attracting a life partner or making a career change. It may also include inner goals, such as activating creative flow, developing intuition, or cultivating confidence.

cont.

FAQS

ARE YOU AN ACCREDITED TEACHING ORGANIZATION?

Accreditation is a Western academic concept whereby a third-party organization validates a school's credentials by certifying that they meet certain criteria.

At present, there isn't a third-party certification specifically tailored for psychedelic training programs. This is because psychedelics are still illegal in most locales.

It's important to acknowledge that Western certification standards imposed on ancestral medicines have faced criticism for being perceived as gatekeeping within the medical and psychiatric industry, as well as another form of colonization.

As an organization with decolonization as one of our core values, we question the practice of legitimizing only the programs that conform to Western academic standards as valid...especially with regards to medicines that were originally indigenous.

cont.

APPLY NOW

DO YOU OFFER CONTINUING EDUCATION (CE) CREDITS?

The Spiritual Competency Academy is an organization through which many psychedelic training programs are about to offer continuing education (CE) credits.

They are an approved provider for the California Board of Behavioral Sciences which accepts CE credits for license renewal by LCSWs, MFTs, LPCCs, and LMHCs

We have explored extensively what it would take to qualify as a CE partner through the SCA. Unfortunately, their accreditation criteria requires that all of our faculty have graduate degrees in the area that they are teaching.

This would mean we would have to replace some of the incredibly gifted, deeply experienced teachers (some with many years of indigenous apprenticeship) with individuals that have a graduate university degree.

As an integration coach training program, we feel that it is more important to have our students learn from experienced plant medicine integration specialists and ceremony facilitators rather than from faculty whose gravitas is based on university credentials, clinical research, or the authorship of academic papers.

FAQS

DO YOU OFFER INTERNATIONALLY-RECOGNIZED COACHING CERTIFICATION?

In the coaching industry, third-party certification standards are not universally established.

Each organization tends to create its own certification program, and the strength of the certification largely depends on the reputation of the brand.

There are 3rd party organizations like the International Coaching Federation (ICF) or the International Association of Coaching (IAC). But in order for Plant Spirit School, or any coaching school, to offer ICF or IAC accreditation, the school would need to:

- Have a curriculum founded on ICF or IAC coaching methods, which is completely different than plant medicine integration and
- Be taught by certified ICF or IAC trainers

At present, we do not have any plans to integrate ICF or IAC coach training into our curriculum.

cont.

APPLY NOW

HOW ARE STUDENTS EVALUATED FOR PLANT SPIRIT SCHOOL CERTIFICATION?

Our evaluation system was developed in an effort to maintain the integrity of the Plant Spirit School Certification. Students are evaluated based on required assignments including quizzes, self-reflection questions, role-play practices, and workbooks that are aligned with The Integration Coach Success Pathway.

WHAT'S THE DIFFERENCE BETWEEN CERTIFICATION & CERTIFICATE OF COMPLETION?

In the academic and medical industries, the word "certification" implies "validation by a 3rd party licensing board". However, the coaching industry is an unlicensed industry, and many coaching companies come up with their own certification program. There are certified Law of Attraction Coaches, Manifestation Coaches, Millionaire Mindset Coaches, you name it.

The certification programs that coaching companies develop would be called "certificates of completion" by the academic and medical sectors. At the end of the day, it really boils down to industry semantics.

cont.

FAQS

FAQS

APPLY NOW

WHY IS THIS PROGRAM SO EXPENSIVE? HOW IS THIS INVESTMENT LEVEL ACCESSIBLE TO BIPOC?

The tuition fee is a fair and competitive reflection of the value provided by this **6-month intensive program**. In our considerable research into comparable programs, we have found that the vast majority of 6-12 month psychedelic training programs are **\$8K - \$25K in investment**. Good online business masterminds are also typically in the \$10K range.

The Plant Spirit School Coach Certification program offers more live calls with more expert faculty, and a larger library of resources than most programs of this caliber.

High-end, high-touch group programs with live calls and personalized coaching support, typically offer only 2-4 live calls a month. We offer 4-6 lectures a month, as well as monthly virtual workshops and retreats.

We do have many offers that require much lower investment, and these are typically home-study courses. We also have a scholarship program for qualified BIPOC applicants with financial need.

cont.

APPLY NOW

WHAT IS YOUR BUSINESS MODEL?

We are a small, private, for-profit social enterprise. We are not a volunteer-run nonprofit organization that relies on individual donors and grants in order to operate. **All of our faculty are compensated a fair market value** for their wisdom and expertise. Furthermore, our team of dedicated staff who have worked around the clock for months to bring this program to life is also paid a fair market wage for their labor.

Like most companies, **we keep our valued team employed throughout the calendar year**, even though the business only brings in meaningful revenue during major event launches and program enrollment periods, which take place twice a year. Therefore, we need to charge tuition rates that can keep the business running and provide our team with the stable employment they deserve.

We are also not a venture-funded initiative supported by high-tech or cannabis capital. All revenues generated from the sale of Plant Spirit School programs go back into the company to create new, educational offers. The Plant Spirit School is a self-funded business that follows the principles of Sacred Commerce, whereby the Founder is the last person paid.

cont.

FAQS

HOW QUALIFIED ARE YOUR FACULTY TO TEACH THIS MATERIAL?

The question of "qualification" to work with others with their entheogenic integration, as well as "qualification" to teach is a deeply nuanced one. **The concept of "qualifications" can appear arbitrary**, especially if they are based upon academic degrees tied to the Western medical system.

Years of experience might be another filter, but having many years of psychedelic experience doesn't automatically translate to skilled, trauma-informed care of other individuals.

Apprenticeships are also another filter, but Western science tends to dismiss the value of, ancestral, lineage based wisdom traditions.

Furthermore, underground facilitators also contribute tremendous wisdom and best practices to the psychedelic community.

That being said, most of the faculty have decades of experience with psychedelics. They are experienced facilitators, guides, and integration specialists. **Lorna Liana has 30 years of experience with entheogenic states.**

APPLY NOW

THIS LOOKS LIKE IT'S JUST A "HOW TO MAKE MONEY AT INTEGRATION COACHING" PROGRAM.

Yes and no. Yes, because Lorna Liana will be teaching the students how to grow a psychedelic online brand and coaching business. No, it's not only business and marketing training. Most of the curriculum is focused on the art and science of plant medicine integration, and is taught by experienced medicine facilitators, psychedelic therapists, and coaches who are actively engaged in this work.

One of the biggest problems with all of these psychedelic training programs is that they do not offer adequate business training. So at the end of the program, students are less the thousands of dollars they just paid, have all the transformational skills, but still have no idea how to begin attracting clients.

While we cannot guarantee business results, we do wish to provide students with viable online business skills so that they serve clients and be paid for their service as soon as possible.

FAQS

**YOU USE THE WORD “SHAMAN” AND “SHAMANIC” FREQUENTLY.
ISN'T “SHAMAN” AND “SHAMANISM” TECHNICALLY FROM SIBERIA?**

A "shaman" can be defined as an earth-centered community guide and healer who travels between worlds to gather and transmit information that helps individuals and the community. A “shaman” is a person regarded as having access to, and influence in the world of benevolent and malevolent spirits. A shaman acts as an intermediary between the natural and supernatural worlds, using magic to cure illness, foretell the future, control spiritual and elemental forces, and affect outcomes in the physical world. Typically, such people enter a trance state during rituals of divination and healing.

It's important to note that not all medicine ceremony leaders are doctors and healers. Because few people in English-speaking society know what “pajé”, “onanya”, “mara'akame”, or “curandero” means, and most understand the concept of “shaman”, we've chosen intentionally to use the word “shaman” in our literature in order to communicate this concept, for lack of a better alternative word.

cont.

APPLY NOW

WHY AREN'T INDIGENOUS TEACHERS AND TEACHINGS AT THE CORE OF THE PROGRAM?

With the expansion of sacred plant medicines around the world, medicine culture is becoming increasingly globalized and multicultural. These days, there are more non-indigenous people consuming sacred plant medicines and facilitating medicine ceremonies than indigenous.

Because of this phenomenon, we thought it essential that the integration practices being taught are appropriate for contemporary Western culture since those in most need of integration support are typically those from Western societies in the Global North.

For this reason, 70% of the program is focused on transformational modalities that were developed in the West with 30% of the program based on indigenous wisdom teachings.

cont.

FAQS



FAQS

[APPLY NOW](#)

WHY IS THE CONTENT ABOUT INDIGENOUS HEALING MODALITIES BEING TAUGHT BY SOMEONE WHO IS NON-INDIGENOUS?

Our lead coach, Marc-John Brown, is a long-time apprentice of Shipibo Master plant medicine healers from the Peruvian Amazon. Frequently in Peru, he visits with his teachers often and has married into a family of healers. He has the permission of his teachers to teach these healing modalities and has the capacity to do so in English, which is necessary for our student body of native English speakers.

We would love to include indigenous wisdomkeepers in a more prominent way, but the way that they teach is much more conducive to in-person, residential, apprenticeship-oriented instruction. The indigenous teachers contributing to the program have primary responsibilities as healers in their community and face many logistical challenges in accessing the internet. We do our best to invite wisdom keepers to share their wisdom over Zoom but also have to rely on locally-recorded content filmed with the support of our field correspondents. Should you decide to travel to their community, the wisdomkeepers welcome you with open arms.

cont.

APPLY NOW

WHAT'S THE DIFFERENCE BETWEEN PSYCHEDELICS-ASSISTED PSYCHOTHERAPY AND PSYCHEDELIC INTEGRATION?

Psychedelics-assisted psychotherapy is a therapeutic modality which takes place in a clinical setting under the supervision of academically trained specialists. It centers around the ingestion of a psychedelic substance by participants to treat a myriad of conditions and typically includes both preparatory and integrative sessions.

Psychedelic integration is the process of taking ideas, imagery, memories, and epiphanies that may have come up during the journey and implementing them so that they may be applied to everyday life. This may be done by both therapists and coaches.

cont.

FAQS

[APPLY NOW](#)

FAQS

WHY DON'T CEREMONY FACILITATORS OR RETREAT ORGANIZERS PROVIDE ONGOING INTEGRATION SUPPORT TO PARTICIPANTS?

Integration support is a responsibility that requires certain skills and training to do well, that anyone with the interest and commitment can learn. Some ceremony facilitators do offer integration packages but many do not. High-end retreat centers like Soltara in Costa Rica offer ongoing integration support.

The ones that do typically have a psychotherapy or coaching background. Others, such as indigenous ceremony leaders, shamanic healers, and medicine musicians may not be well-resourced or trained to offer ongoing support. Organizing and leading ceremonies and retreats is already a lot of work; many have day jobs, and thus do not have the extra capacity. Many facilitators do not feel it is their responsibility to provide integration support.

Ceremony guardians and helpers, volunteer members of the community who assist the ceremony, often do not have the skills or capacity to provide ongoing integration support, either. What happens all too frequently is that participants are left to process the insights, emotions, and traumas activated by the ceremony experience entirely on their own.

cont.

APPLY NOW

WHOSE RESPONSIBILITY IS IT TO PROVIDE INTEGRATION SUPPORT?

Due to the nature of the psychedelic experience, lack of adequate integration can potentiate past traumas leaving individuals grappling with new personal challenges triggered by the ceremony itself. Having a referral network of trained integration providers is imperative for the safety and well-being of participants.

Underground ceremony facilitators are often ill-equipped to provide ongoing support since their primary focus is hosting and leading ceremonies. Ceremony assistants are typically members of the community who volunteer their time to support a ceremony, and not to offer ongoing integration support to participants.

WHY IS THERE SO MUCH FOCUS ON PSYCHEDELIC INTEGRATION?

In traditional communities, there is no need for additional integration support as the culture itself is integrative. The ceremony participants receive the integration support from the communities they live in. In comparison, Western society is not set up to help people integrate profound transformational experiences. The Western materialist paradigm rejects the experience of non-ordinary states of consciousness, highlighting the demand for more trained specialists in the Western world.

cont.

FAQS

WHICH IS A BETTER CAREER CHOICE, TO BE A PSYCHEDELIC INTEGRATION COACH OR A LICENSED INTEGRATION THERAPIST?

This is a deeply personal choice. The academic training required to be a licensed psychotherapist or health care professional takes a considerable investment of time and finances.

Licensed therapists have limitations and can risk losing their license if they are found to be endorsing or administering scheduled substances. Coaching is an unlicensed profession, so anyone can set up shop as an "integration coach" without any 3rd party, professional oversight.

Licensed therapists typically charge by the hour, and tend to focus on helping their patients resolve problems. Coaches typically support clients in achieving desired outcomes and often sell packages.

The choice of career track depends on many things such as your academic interests, your philosophy around healing and transformation, financial resources, and stage in life.

APPLY NOW

WHY AREN'T THERE ENOUGH PSYCHEDELIC INTEGRATION PROVIDERS?

Decriminalization and legalization of psychedelics as breakthrough treatments for mental health are expanding around the world. As a result, **the current demand for psychedelic therapy is growing rapidly**, with patients of legal ketamine clinics experiencing long wait times. Because psychedelic medicine remains illegal in most locales, many are turning to underground facilitators, plant medicine ceremonies, and retreats.

With the increase in interest for psychedelics, there is a proportional increase in demand for integration support. At the moment, there is a bottleneck with notable organizations that are training psychedelic therapists - they **are not graduating people fast enough**. This is why there aren't enough qualified people to meet the increasing demand for psychedelic medicine.

The promise of psychedelics to address the global mental health crisis is only as strong as the availability of qualified integration specialists who can support clients through the most transformational experience of their lives. This is why **now is an opportune time to become a certified plant medicine integration coach**.

FAQS

ANCESTOR MESSENGER

Medicina Carrier

**Flame Bearer, Bright Star
Child in the Area**

Shine Your Divine Light, Pray, Praising Creator

Remember your purpose in life - what you came
here for,

what you're waiting for, what you're aiming for

Spread your wings and soar to the other shore.

Paradise life's pure,
birthright safe and secure...so open up the door!

~ Devananda

